

F

U

T

U

R

A

Donovan Brinson
Type Specimen Booklet
Typography II

PANTONE
185 C

RICH
BLACK

PAPER
WHITE

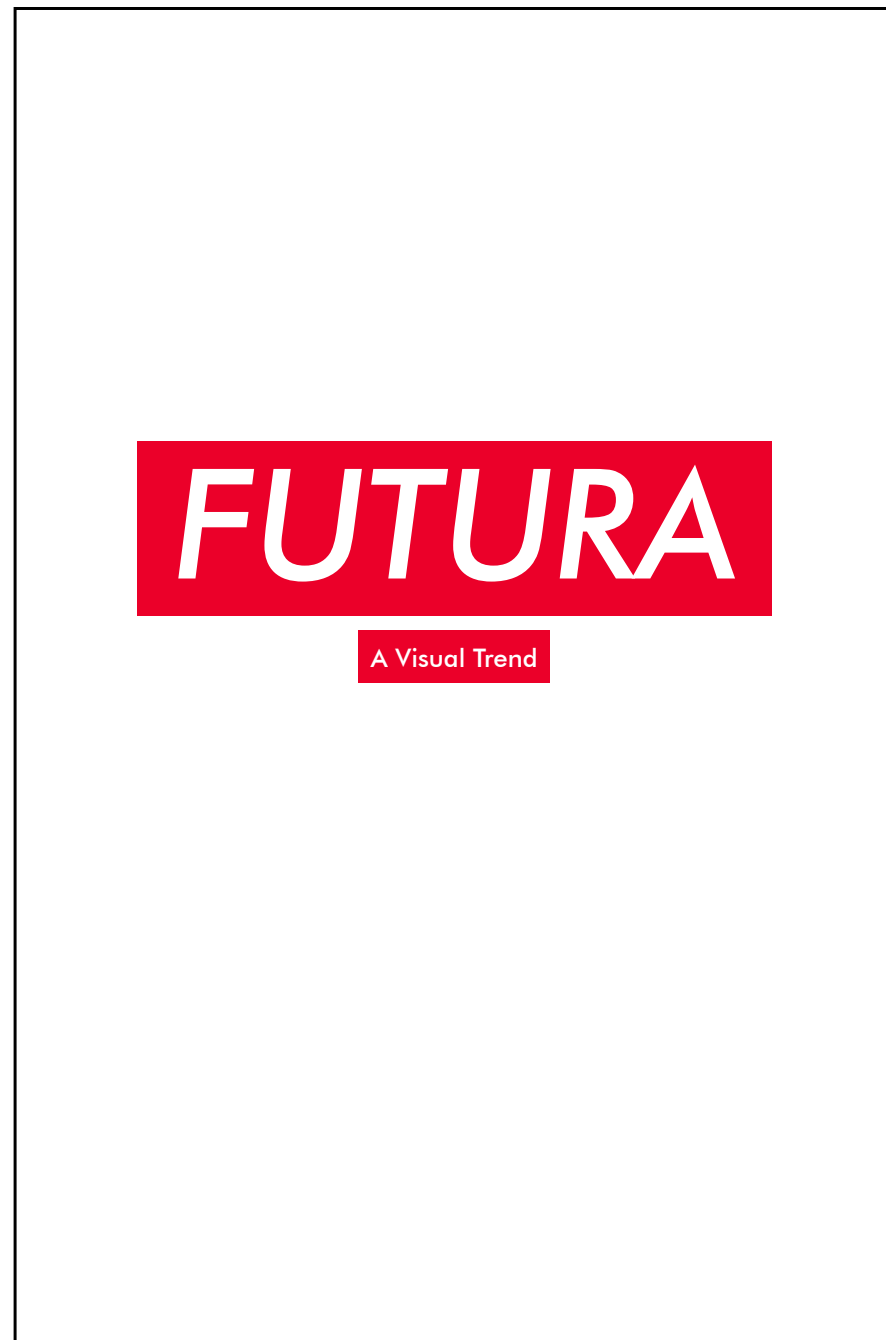
Color Palette

inspired by the work's of
Supreme & *Barbara Kruger*

Supreme



Front Cover Revisions



History Page Revisions

Futura

The forms of Futura's capital letters can be traced back to ancient Greek lapidary letters. The Bauer production department reinterpreted his design, removing many of the odd shapes while maintaining the basic notion of letters reflecting simple geometric shapes. The ascenders were redrawn taller than the capitals, and character widths were adjusted to reflect traditional 16th century proportions.

Renner's is generally credited as the creator of Futura based on its geometric forms, although there were other typefaces that predate Futura's release in 1927. Renner also made many presentations and lectures about his new design prior to its release, and some believe that other designers and type foundries took his concept and turned it into fonts of type prior to the Bauer release of Futura.

Hi story

The forms of Futura's capital letters can be traced back to ancient Greek lapidary letters. The Bauer production department reinterpreted his design, removing many of the odd shapes while maintaining the basic notion of letters reflecting simple geometric shapes. The ascenders were redrawn taller than the capitals, and character widths were adjusted to reflect traditional 16th century proportions.

Hi story

The forms of Futura's capital letters can be traced back to ancient Greek lapidary letters. The Bauer production department reinterpreted his design, removing many of the odd shapes while maintaining the basic notion of letters reflecting simple geometric shapes. The ascenders were redrawn taller than the capitals, and character widths were adjusted to reflect traditional 16th century proportions.

GEOMETRIC SANS SERIF ESTABLISHED 1927

Renner's is generally credited as the creator of Futura based on its geometric forms, although there were other typefaces that predate Futura's release in 1927. Renner also made many presentations and lectures about his new design prior to its release, and some believe that other designers and type foundries took his concept and turned it into fonts of type prior to the Bauer release of Futura.

GEOMETRIC SANS SERIF

Renner's is generally credited as the creator of Futura based on its geometric forms, although there were other typefaces that predate Futura's release in 1927. Renner also made many presentations and lectures about his new design prior to its release, and some believe that other designers and type foundries took his concept and turned it into fonts of type prior to the Bauer release of Futura.

GEOMETRIC

SANS SERIF

1927

The forms of Futura’s capital letters can be traced back to ancient Greek lapidary letters. The Bauer production department reinterpreted his design, removing many of the odd shapes while maintaining the basic notion of letters reflecting simple geometric shapes. The ascenders were redrawn taller than the capitals, and character widths were adjusted to reflect traditional 16th century proportions.

Renner’s is generally credited as the creator of Futura based on its geometric forms, although there were other typefaces that predate Futura’s release in 1927. Renner also made many presentations and lectures about his new design prior to its release, and some believe that other designers and type foundries took his concept and turned it into fonts of type prior to the Bauer release of Futura.

FUTURA IS THE FUTURE

60 pt

FUTURA IS THE FUTURE

48 pt

FUTURA IS THE FUTURE

36 pt

FUTURA IS THE FUTURE

24 pt

FUTURA IS THE FUTURE

12 pt

History

Futura 60pt

Futura 48pt

Futura 36pt

Futura 24 pt

Futura 12 pt

GEOMETRIC

The forms of Futura’s capital letters can be traced back to ancient Greek lapidary letters. The Bauer production department reinterpreted his design, removing many of the odd shapes while maintaining the basic notion of letters reflecting simple geometric shapes. The ascenders were redrawn taller than the capitals, and character widths were adjusted to reflect traditional 16th century proportions.

Renner’s is generally credited as the creator of Futura based on its geometric forms, although there were other typefaces that predate Futura’s release in 1927. Renner also made many presentations and lectures about his new design prior to its release, and some believe that other designers and type foundries took his concept and turned it into fonts of type prior to the Bauer release of Futura.

1927

GEOMETRIC

SANS SERIF

1927

The forms of Futura’s capital letters can be traced back to ancient Greek lapidary letters. The Bauer production department reinterpreted his design, removing many of the odd shapes while maintaining the basic notion of letters reflecting simple geometric shapes. The ascenders were redrawn taller than the capitals, and character widths were adjusted to reflect traditional 16th century proportions.

Renner’s is generally credited as the creator of Futura based on its geometric forms, although there were other typefaces that predate Futura’s release in 1927. Renner also made many presentations and lectures about his new design prior to its release, and some believe that other designers and type foundries took his concept and turned it into fonts of type prior to the Bauer release of Futura.

FUTURA IS THE FUTURE

60 pt

FUTURA IS THE FUTURE

48 pt

FUTURA IS THE FUTURE

36 pt

FUTURA IS THE FUTURE

24 pt

SANS SERIF

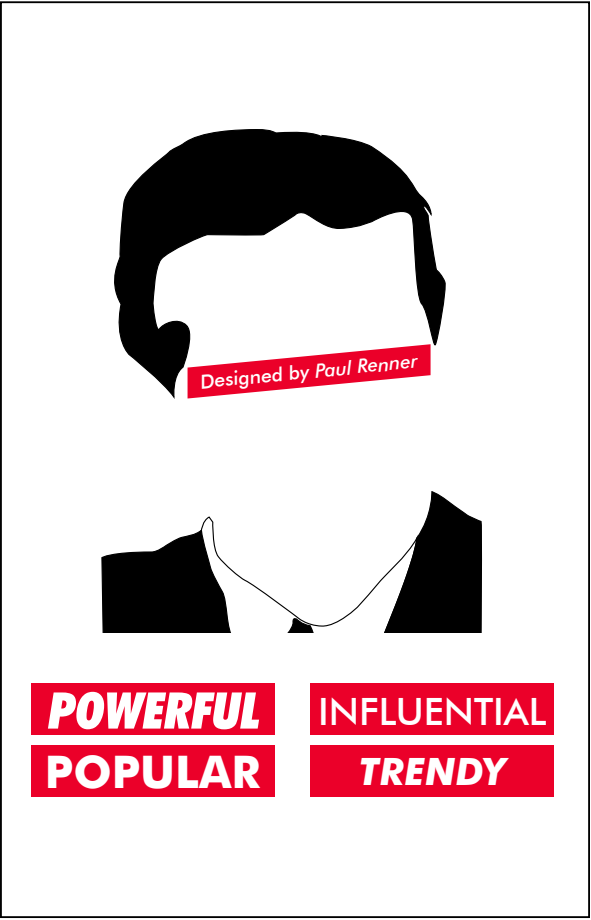
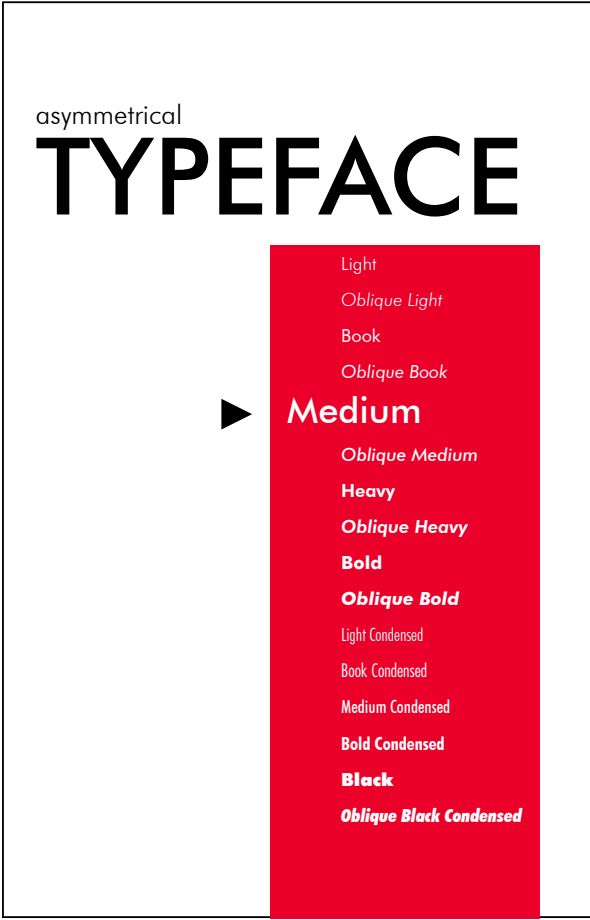
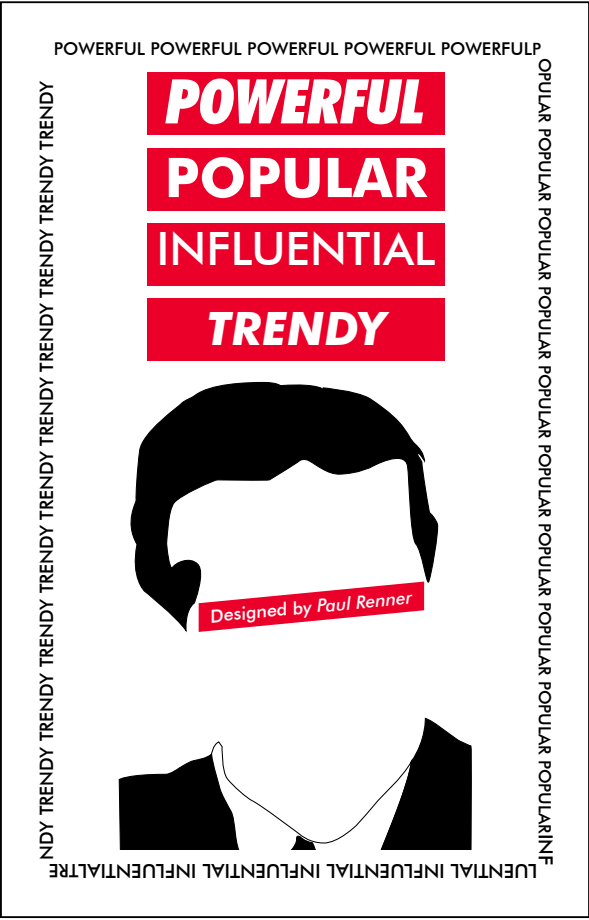
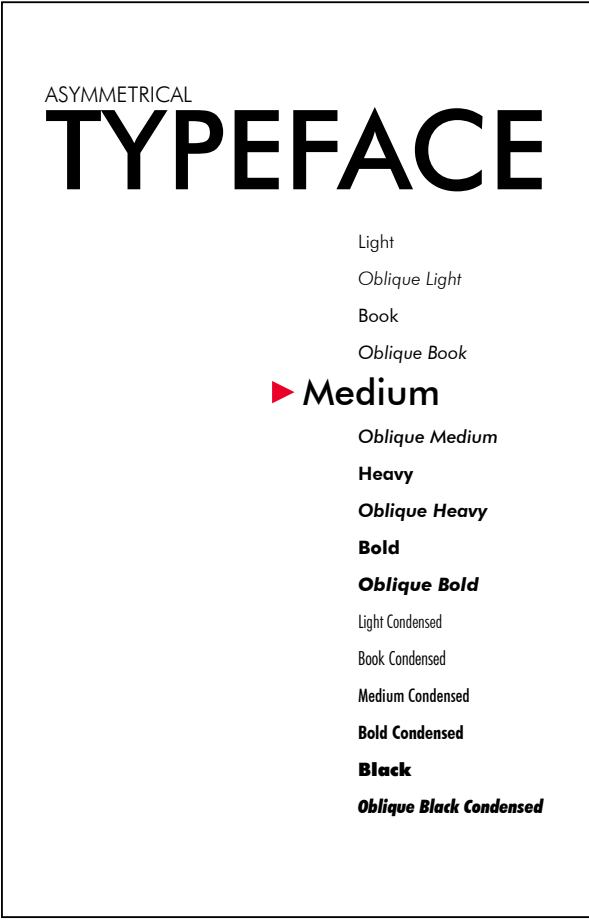
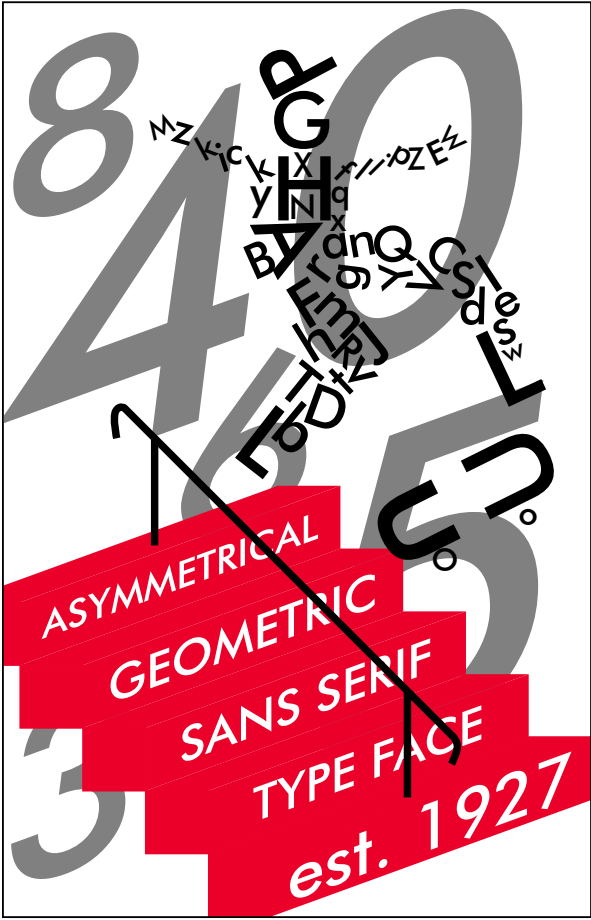
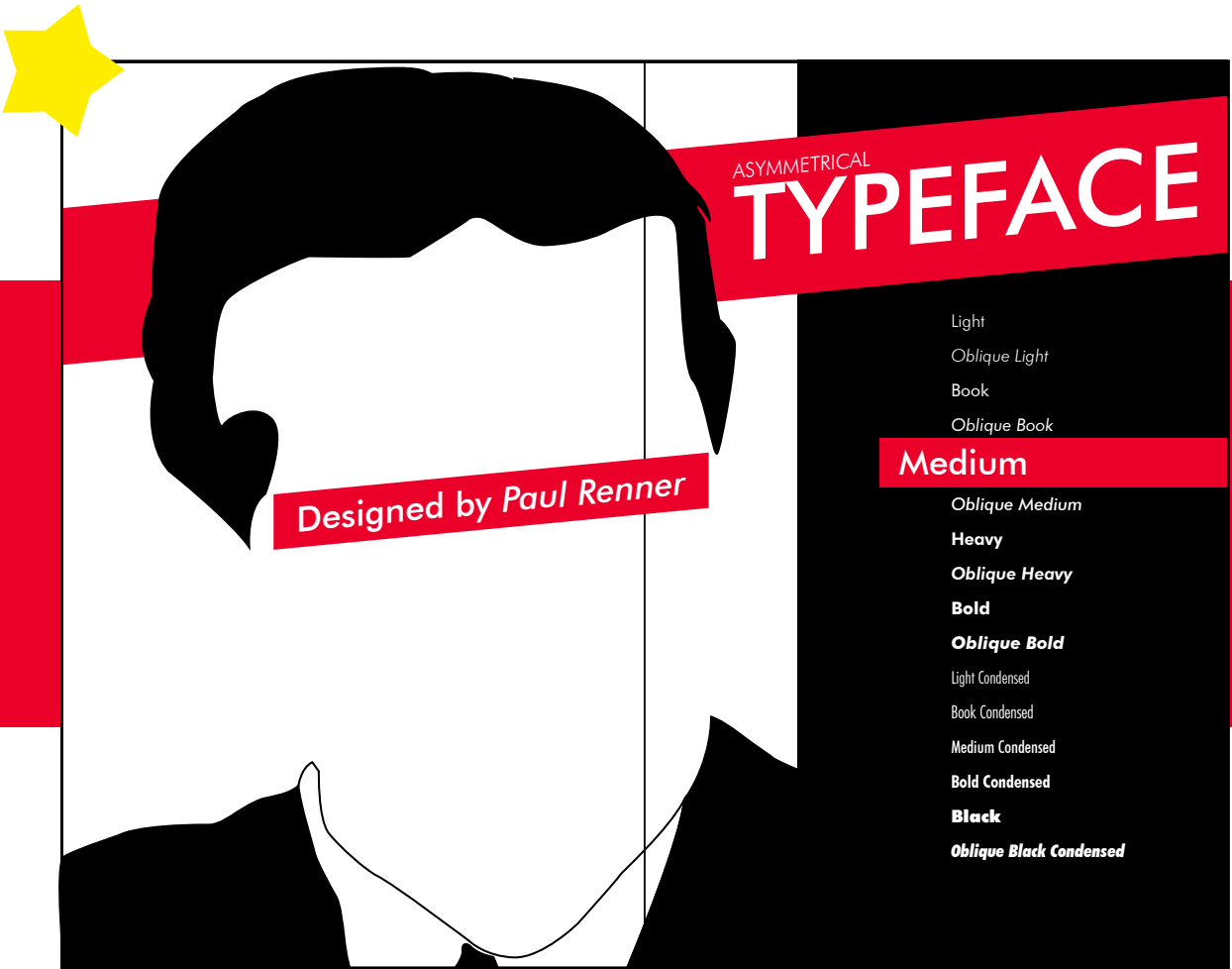
GEOMETRIC

The forms of Futura’s capital letters can be traced back to ancient Greek lapidary letters. The Bauer production department reinterpreted his design, removing many of the odd shapes while maintaining the basic notion of letters reflecting simple geometric shapes. The ascenders were redrawn taller than the capitals, and character widths were adjusted to reflect traditional 16th century proportions.

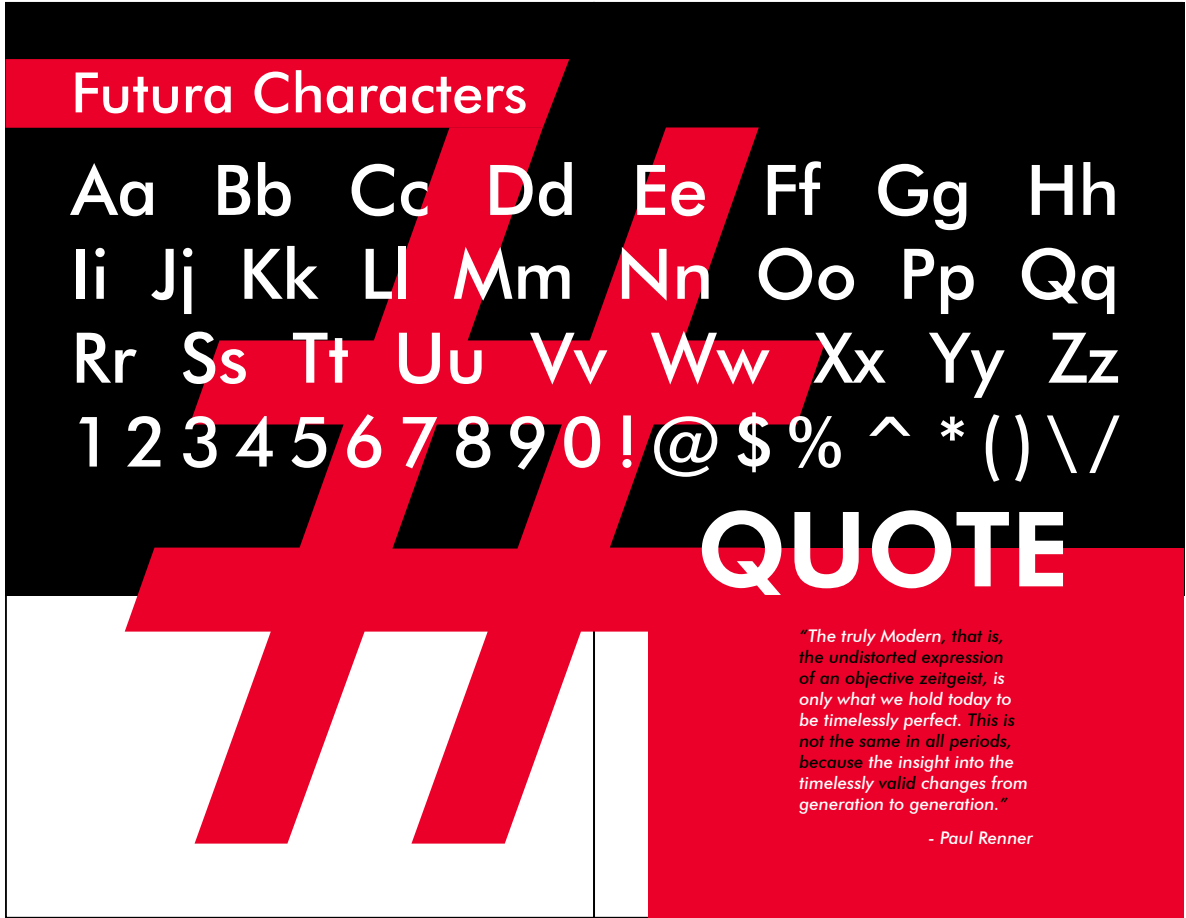
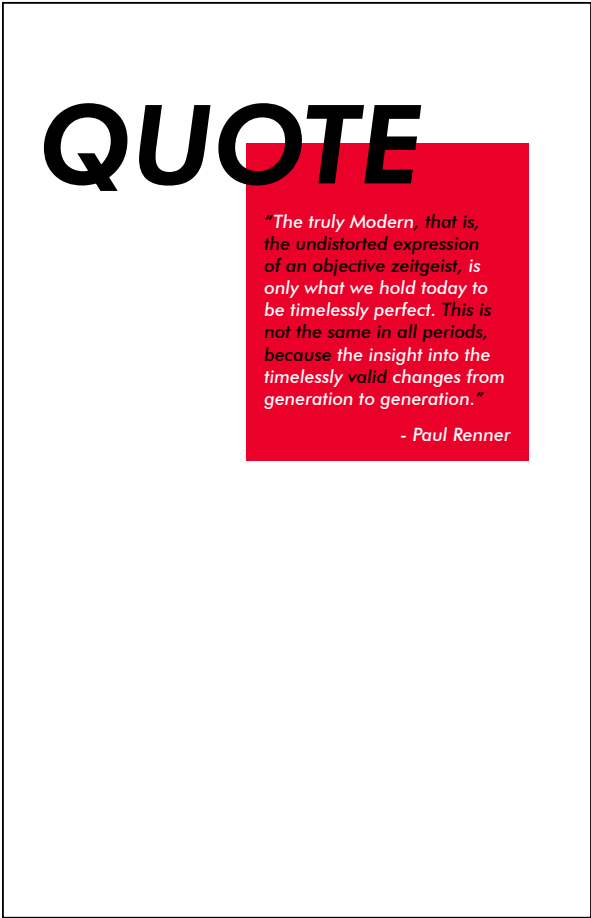
Renner’s is generally credited as the creator of Futura based on its geometric forms, although there were other typefaces that predate Futura’s release in 1927. Renner also made many presentations and lectures about his new design prior to its release, and some believe that other designers and type foundries took his concept and turned it into fonts of type prior to the Bauer release of Futura.

1927

Illustrations and Font Variations Revisions



Characters and Quote Revisions



Back Cover Revisions

FUTURA

A Booklet made by Donovan B.

FUTURA

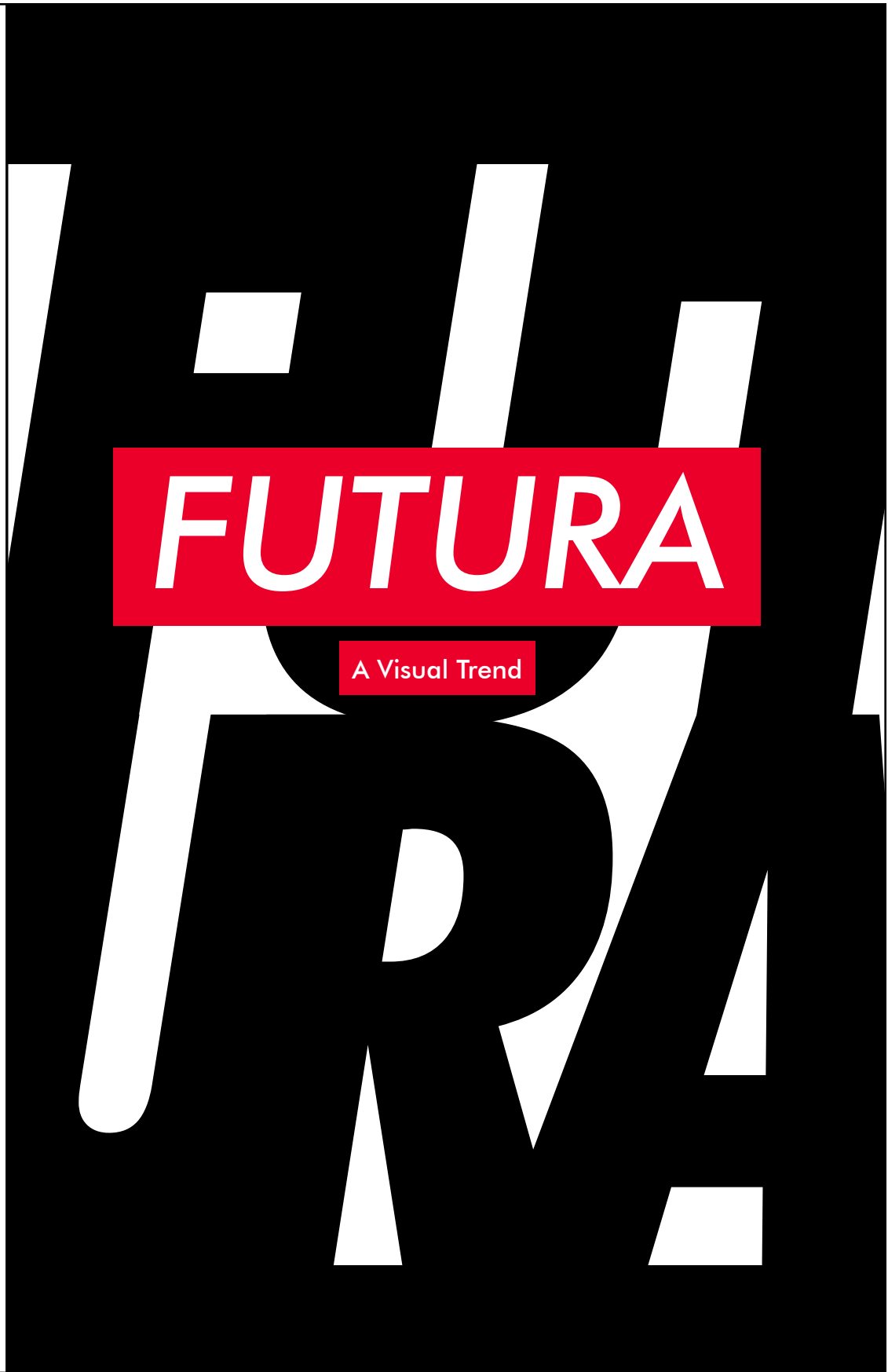
FUTURA

FUTURA

Final Comp

FUTURA

Back Cover



Front Cover

1291

Futura's ***History***

The forms of Futura's capital letters can be traced back to ancient Greek lapidary letters. The Bauer production department reinterpreted his design, removing many of the odd shapes while maintaining the basic notion of letters reflecting simple geometric shapes. The ascenders were redrawn taller than the capitals, and character widths were adjusted to reflect traditional 16th century proportions.

Renner's is generally credited as the creator of Futura based on its geometric forms, although there were other typefaces that predate Futura's release in 1927. Renner also made many presentations and lectures about his new design prior to its release, and some believe that other designers and type foundries took his concept and turned it into fonts of type prior to the Bauer release of Futura.

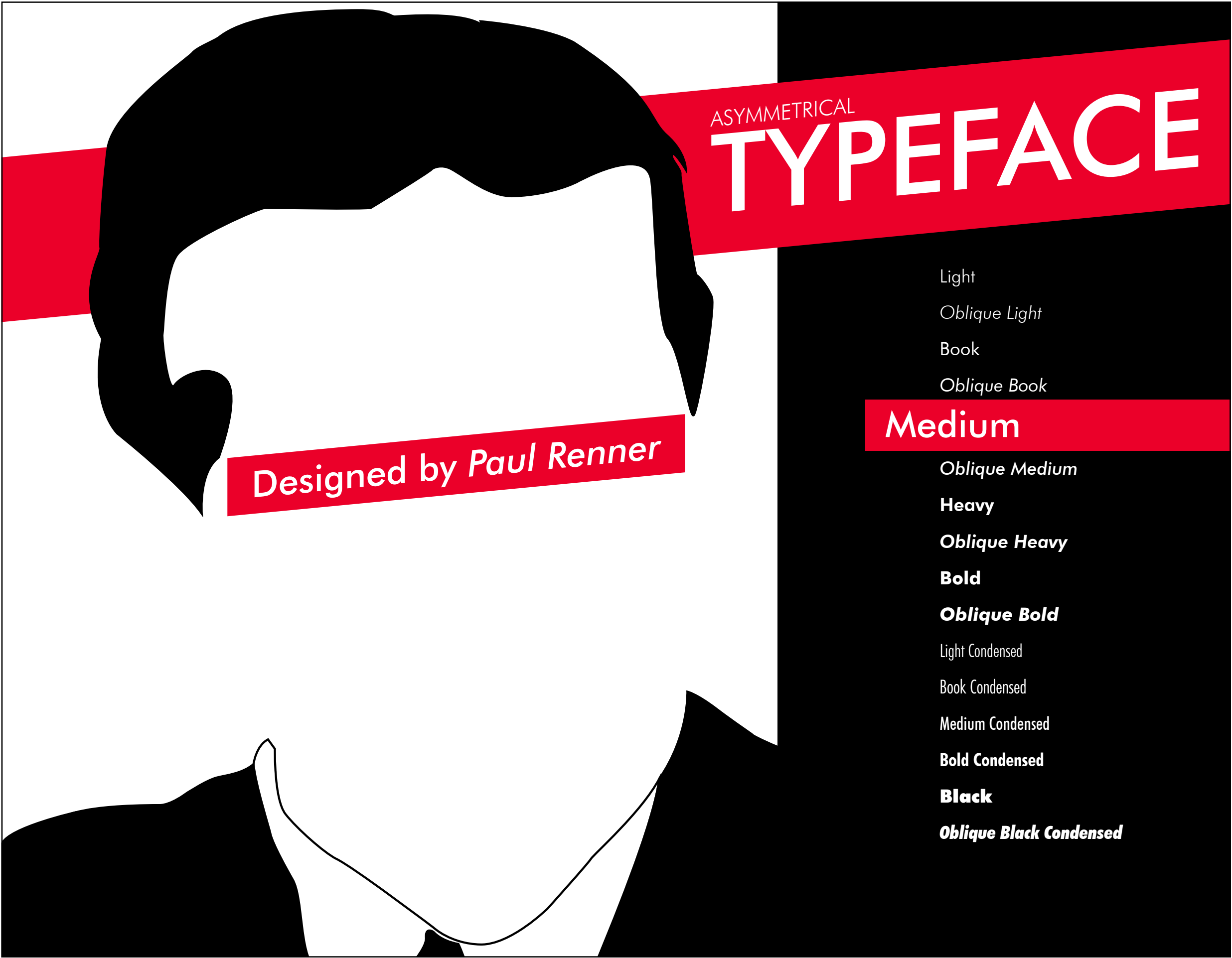
Futura 60pt

Futura 48pt

Futura 36pt

Futura 24 pt

Futura 12 pt



Futura Characters

Aa Bb Cc Dd Ee Ff Gg Hh
Ii Jj Kk Ll Mm Nn Oo Pp Qq
Rr Ss Tt Uu Vv Ww Xx Yy Zz
1 2 3 4 5 6 7 8 9 0 ! @ \$ % ^ * () \ /

QUOTE

*"The truly Modern, that is,
the undistorted expression
of an objective zeitgeist, is
only what we hold today to
be timelessly perfect. This is
not the same in all periods,
because the insight into the
timelessly valid changes from
generation to generation."*

- Paul Renner

FUTURA

Type Specimen Booklet